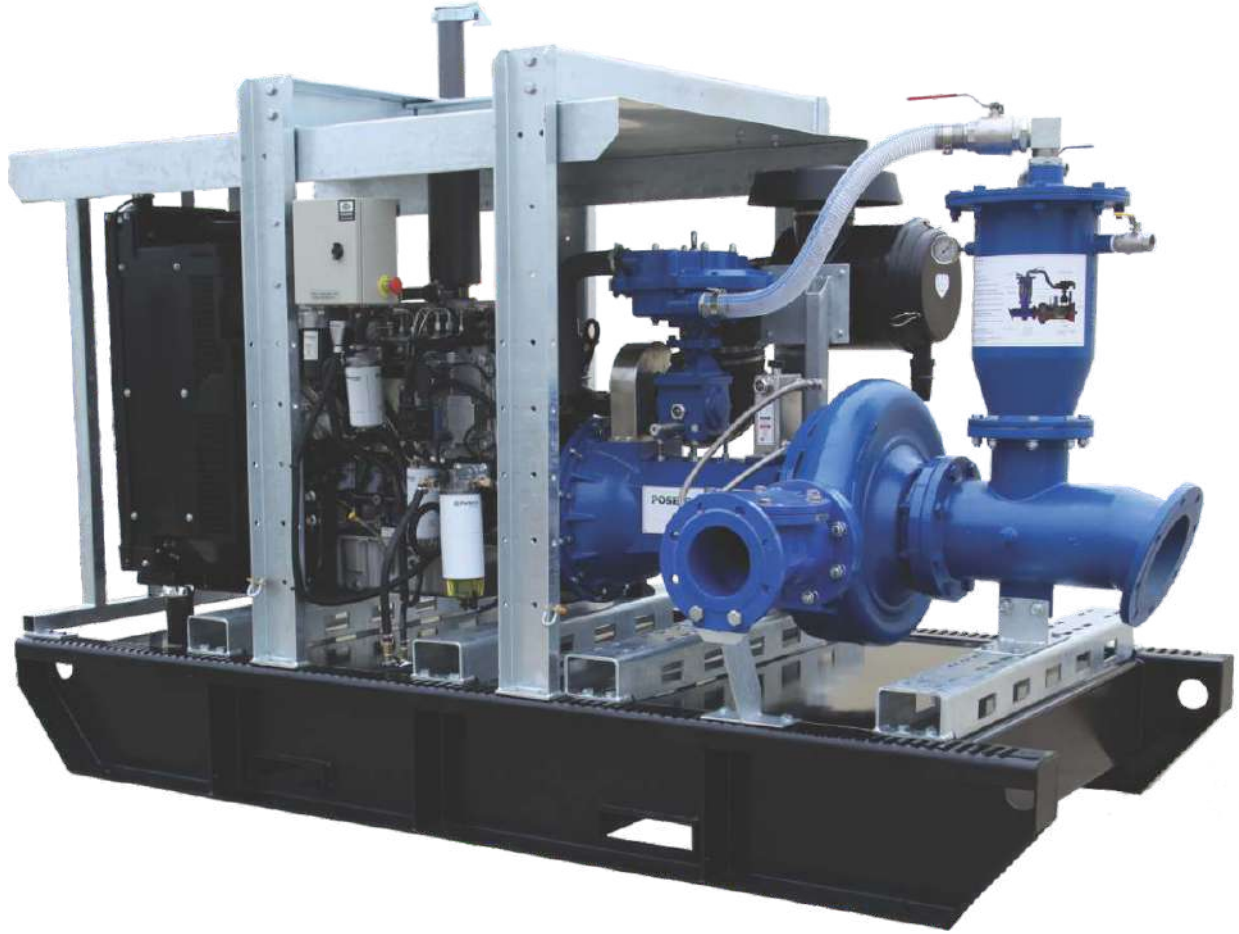


# POSEIDON DRY PRIME SERIES

INDO-AUSTRALIAN JOINT VENTURE AUSTRALIA

## HP Series - 400



### High head medium flow series

#### Standard MOC - Pump Section

1. All Wet ends - SG 500/7
2. Impeller - SS316L
3. Shaft SS-431
4. Diaphragm Pump Single 50 CFM
5. For electrical Driven Galvanized Frame

#### Options - MOC

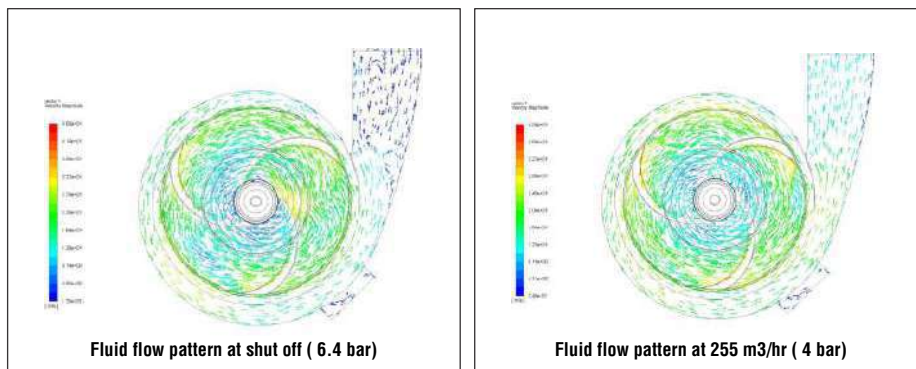
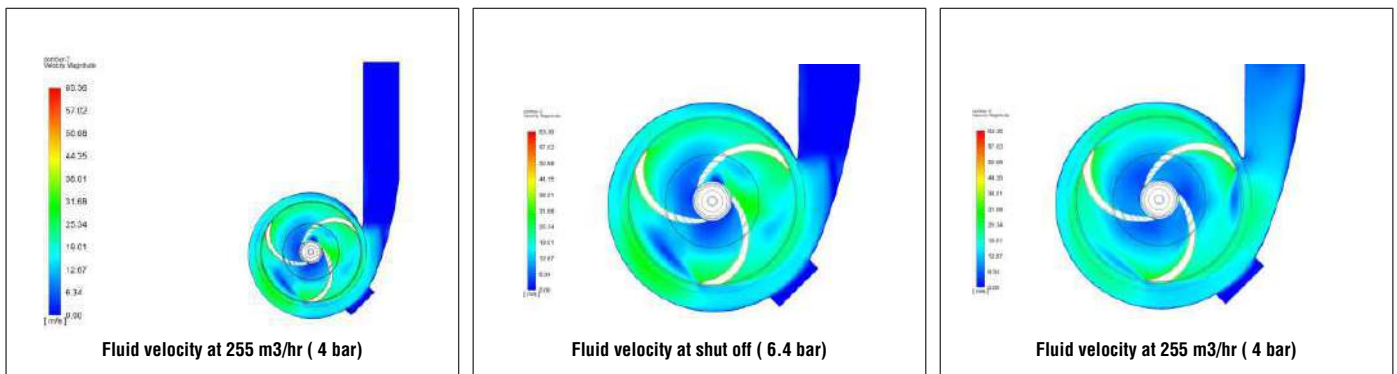
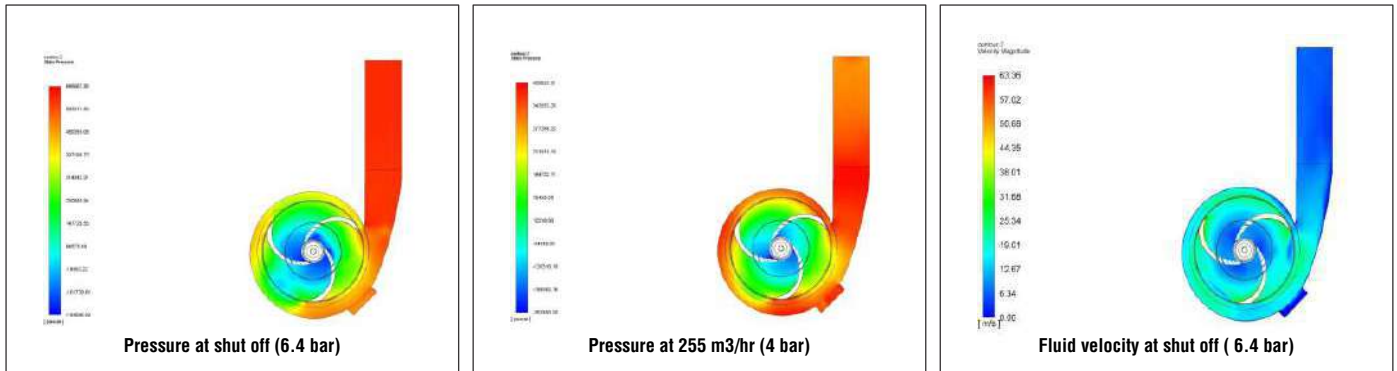
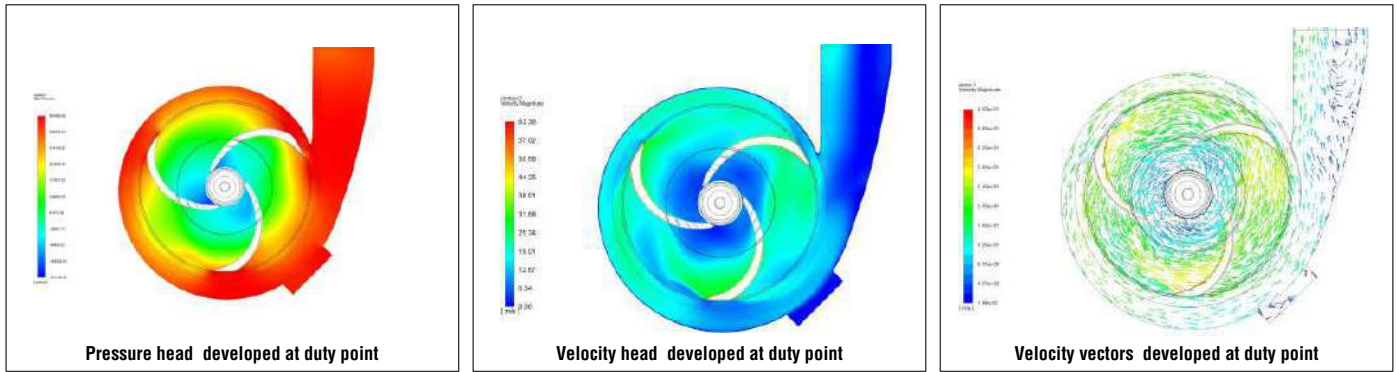
1. SS316L - All Wet ends
2. Duplex Steel - All Wet ends
3. Nickle - Aluminum - Bronze - All Wet ends for Sea Water Application
4. Skid - Road trailer - Site Trailer - Closed enclosure

#### INDRA HYDRO TECH PUMPS PVT LTD

No.85/M, Ground Floor, Industrial Suburb, 2nd Stage Gautham Nagar, Tumkur Road  
 Yeshwanthpur, Bangalore 560 022, Karnataka, INDIA  
 Tel. : +91 80 4163 5638, Mobile: +91 94835 26899 / 80736 22800  
 Email : sales@ihpumps.in, Web : www.ihpindia.in | www.ihpumps.in

## POSEIDON PUMPS

Named after the Greek God of water, symbolising strength in a turbulent environment. The modern Poseidon stands for engineering know-how and reliability in a modern age where the environment, precision manufacturing, reliability, efficiencies and economics are the new norms that rule the waves. No longer are inefficient and wasteful pumps acceptable, inefficiencies cost time and valuable resources. Poseidon Pumps uses the most advanced hydro dynamic CFD computer software available in the market for pump impeller and casing design to optimise pump efficiencies and component reliability. Together with extensive R&D and pump testing in our state of the art computerised pump testing stations, has allowed us to create a highly efficient range of Poseidon pumps with low NPSH.



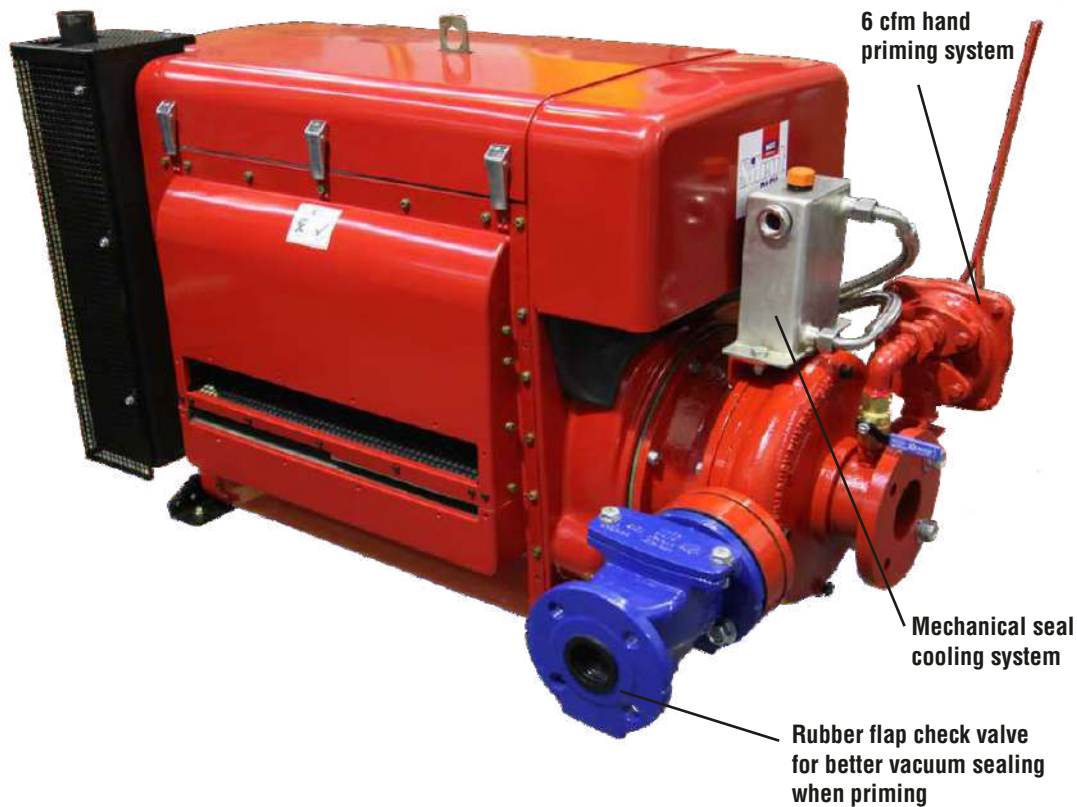
## INDRA HYDRO TECH PUMPS PVT LTD

## Manual Dry Prime Systems

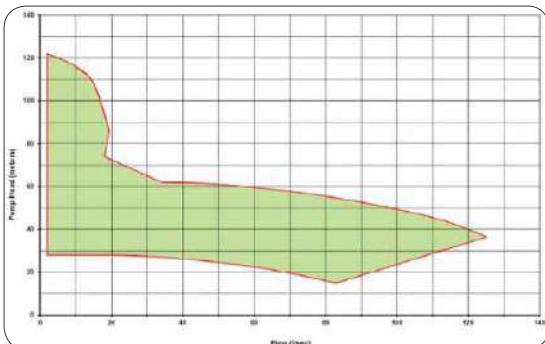
The Poseidon range of Dry Running Manual Prime pumps comes in 5 models which cover a flow range of up to 127L/sec and heads up to 122m. The manual priming system is via a 6 cfm hand diaphragm pump mounted on the centrifugal pump.

Complete with an oil cooled mechanical seal system for dry running of the pump system, an essential feature of preventing premature mechanical seal failure. These pumps are directly coupled to the engine without a bearing housing resulting in a very small foot print.

**A 80x50-250MDP6 pump mounted to a Hatz Silence pack 4 cylinder diesel engine - ideal package for fire fighting purposes.**



As this range of pumps can operate without any initial water charge in the casing, this takes all the worry out of the potential of destroying the mechanical seal when the pump runs out of water. Ideal for emergency services operations where the reliability of water supplies can vary greatly. Also the system does not need a foot valve but can be primed with the manual 6 cfm hand diaphragm priming pump up to 5 to 6m above the water source. The priming pump can be isolated from the main centrifugal pump via a small ball valve. Waste water with small soft solids can also be pumped, this will require a strainer at the inlet of the suction hose to restrict oversized solids to enter the pump.



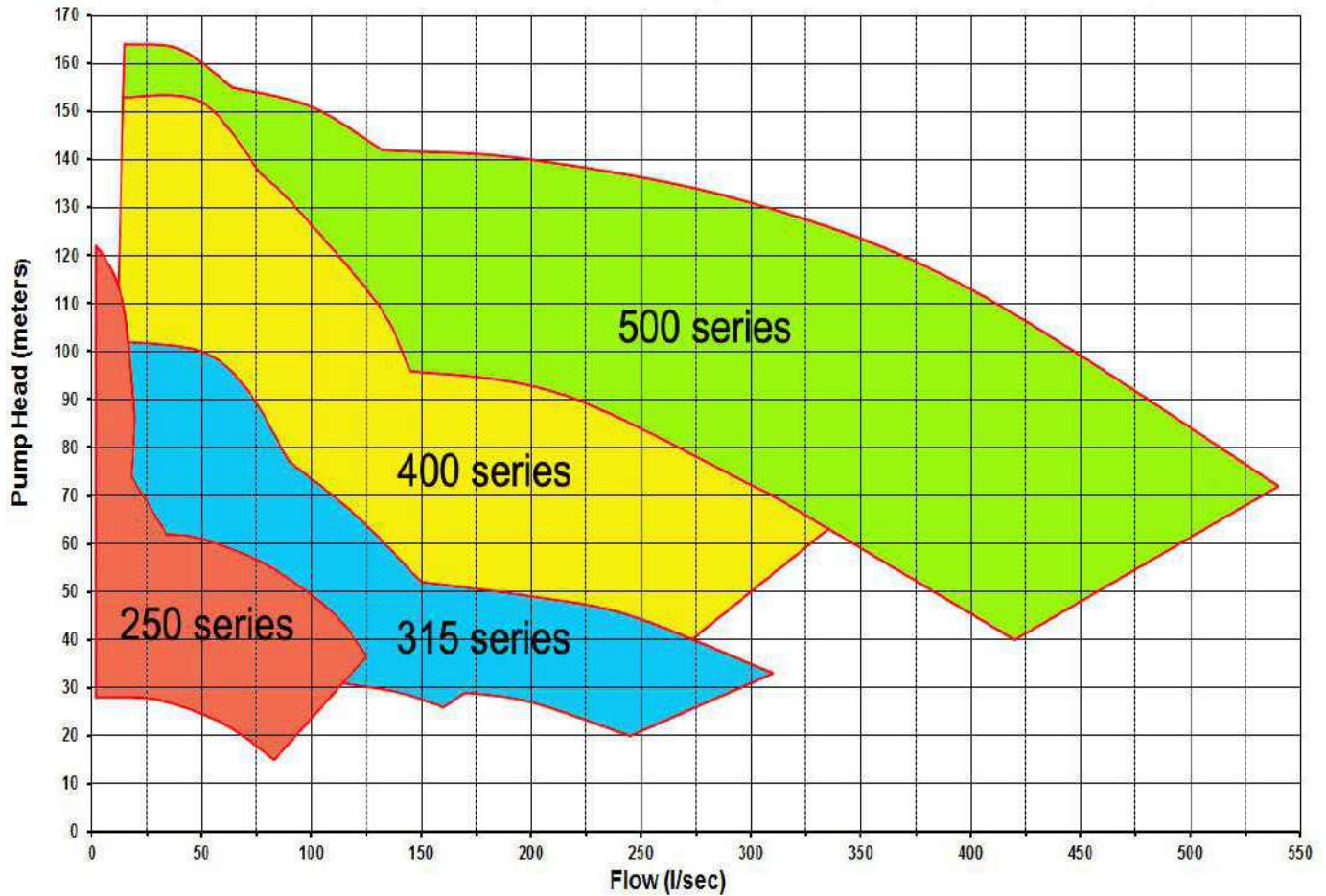
Pump part number	Inlet size mm	Outlet size mm	Power kw	Max flow rate L/sec	Max head m	Max solid size mm
65x40-250A-MPD6	65	40	45	19.5	122	11
80x50-250A-MPD6	80	50	44	27.5	84	16
100x65-250A-MPD6	100	65	53	40	75.5	19
125x100-250A-MPD6	125	100	55	71	65	24
150x125-250A-MPD6	150	125	74	127	62	29

## INDRA HYDRO TECH PUMPS PVT LTD

No.85/M, Ground Floor, Industrial Suburb, 2nd Stage Gautham Nagar, Tumkur Road  
 Yeshwanthpur, Bangalore 560 022, Karnataka, INDIA  
 Tel. : +91 80 4163 5638, Mobile: +91 94835 26899 / 80736 22800  
 Email : sales@ihpumps.in, Web : www.ihpindia.in | www.ihpumps.in

## Automatic Dry Prime Systems

The Poseidon range of Dry Running Automatic Prime pumps comes in 18 models which cover a flow range of up to 540L/sec and heads up to 168m. Automatic priming via the patented Smartprime™ 50 or 100 cfm diaphragm pump and priming tank. Complete with the oil cooled mechanical seal system for the dry running of the pump system.

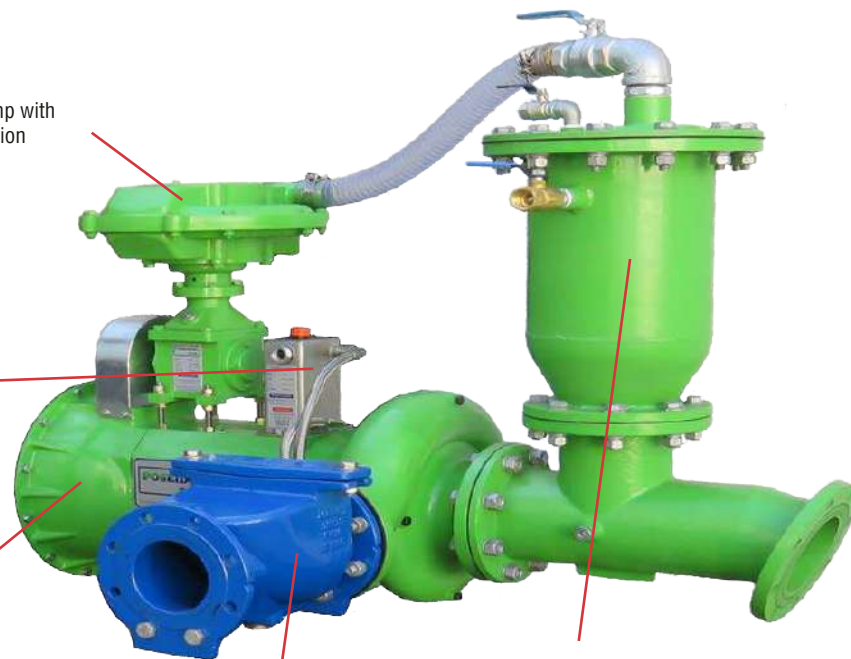


50 cfm Diaphragm priming pump with an oil free vacuum priming suction capacity of 8.4m or 27ft.

A twin head diaphragm pump with a 100cfm capacity is also available for larger air quantity removal requirements.

Mechanical seal oil cooling system for dry running operations.

Directly coupled to a range of engines via a SAE standard bell housing and heavy duty flexible flywheel coupling.



All units come complete with a check valve to allow priming to occur.

Smartprime™ priming tank complete with stainless steel floats and the new Poseidon safety valve preventing fluid entry into the diaphragm pump thus guaranteeing a totally clean and oil or fluid free priming operation

## INDRA HYDRO TECH PUMPS PVT LTD

No.85/M, Ground Floor, Industrial Suburb, 2nd Stage Gautham Nagar, Tumkur Road  
 Yeshwanthpur, Bangalore 560 022, Karnataka, INDIA  
 Tel. : +91 80 4163 5638, Mobile: +91 94835 26899 / 80736 22800  
 Email : sales@ihpumps.in, Web : www.ihpindia.in | www.ihpumps.in

## POSEIDON Pumps

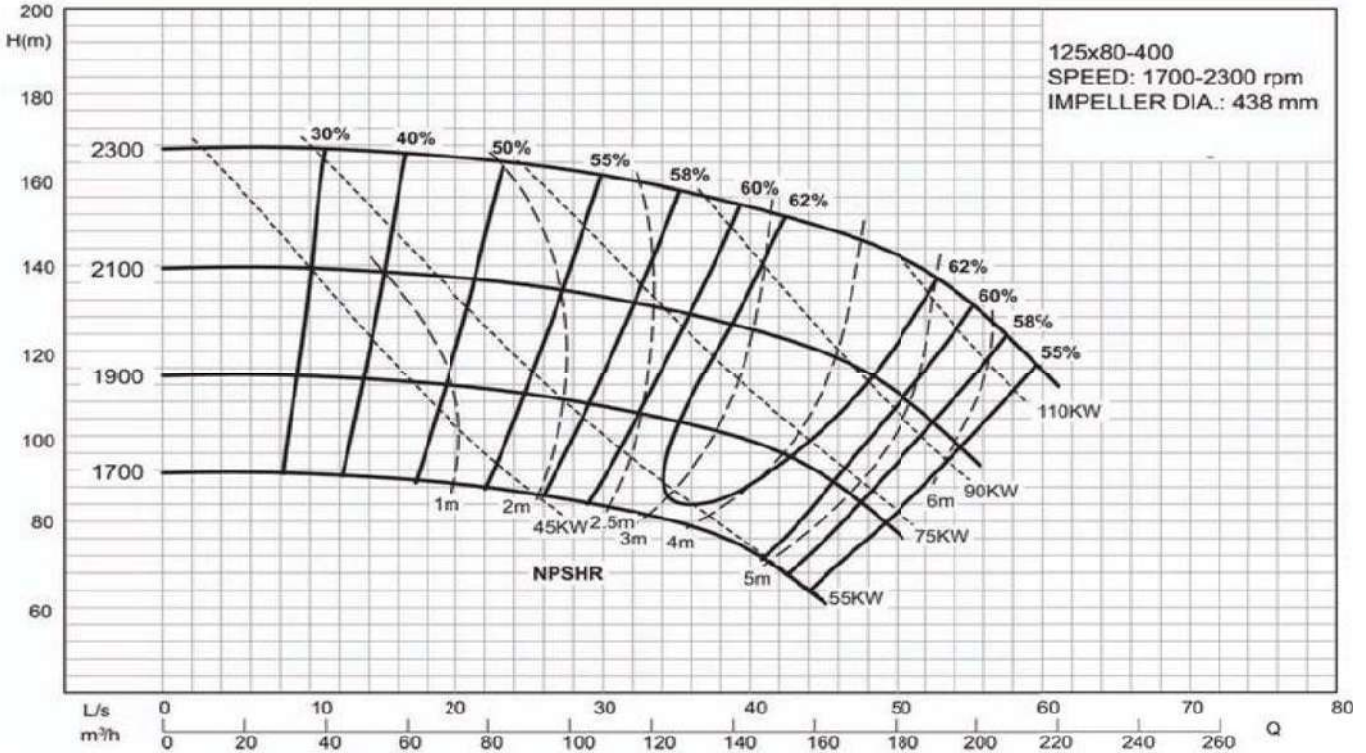
### Automatic Dry Prime 400 series



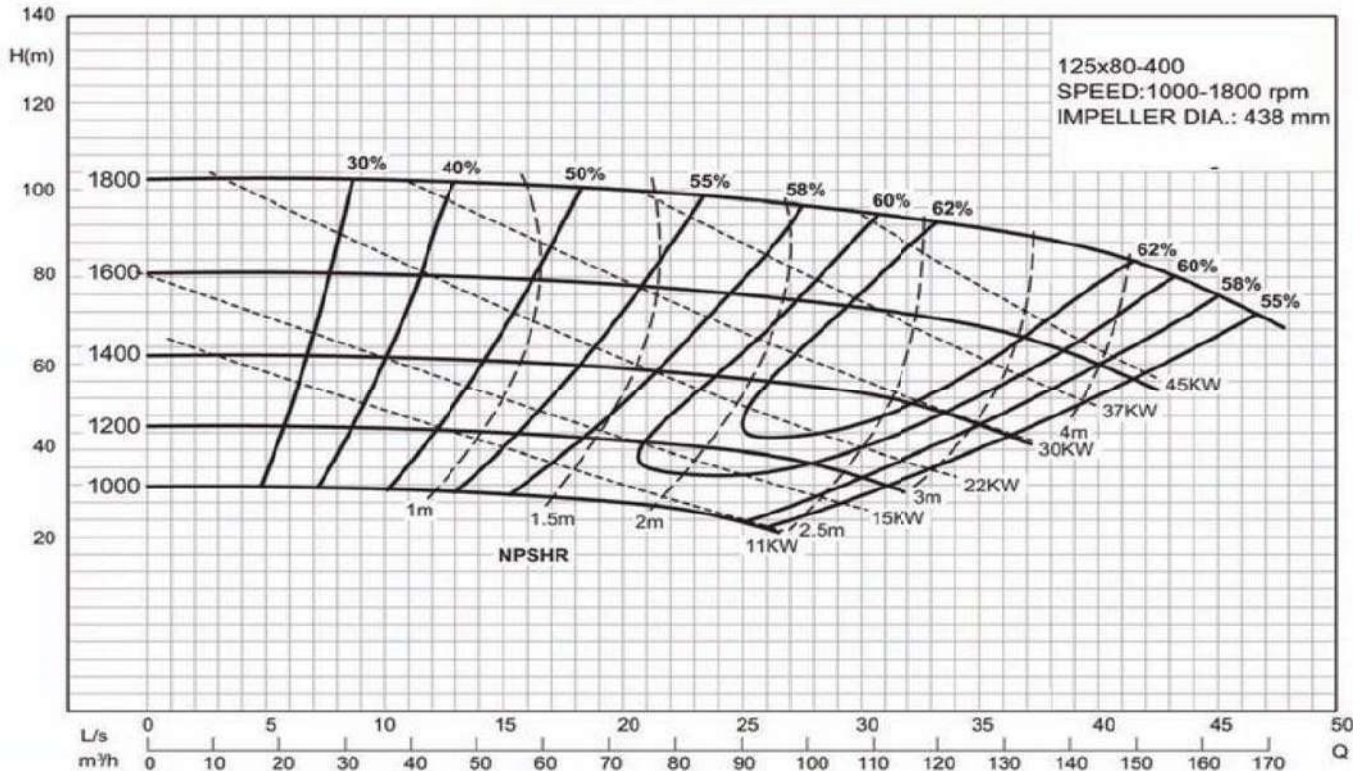
**DRY PRIME PUMPS**

**Part number 125x80-400A-ADP50**

Variable speed - faster speeds:



Variable speed - slower speeds:



### INDRA HYDRO TECH PUMPS PVT LTD

No.85/M, Ground Floor, Industrial Suburb, 2nd Stage Gautham Nagar, Tumkur Road  
Yeshwanthpur, Bangalore 560 022, Karnataka, INDIA  
Tel. : +91 80 4163 5638, Mobile: +91 94835 26899 / 80736 22800  
Email : sales@ihpumps.in, Web : www.ihpindia.in | www.ihpumps.in

# POSEIDON Pumps

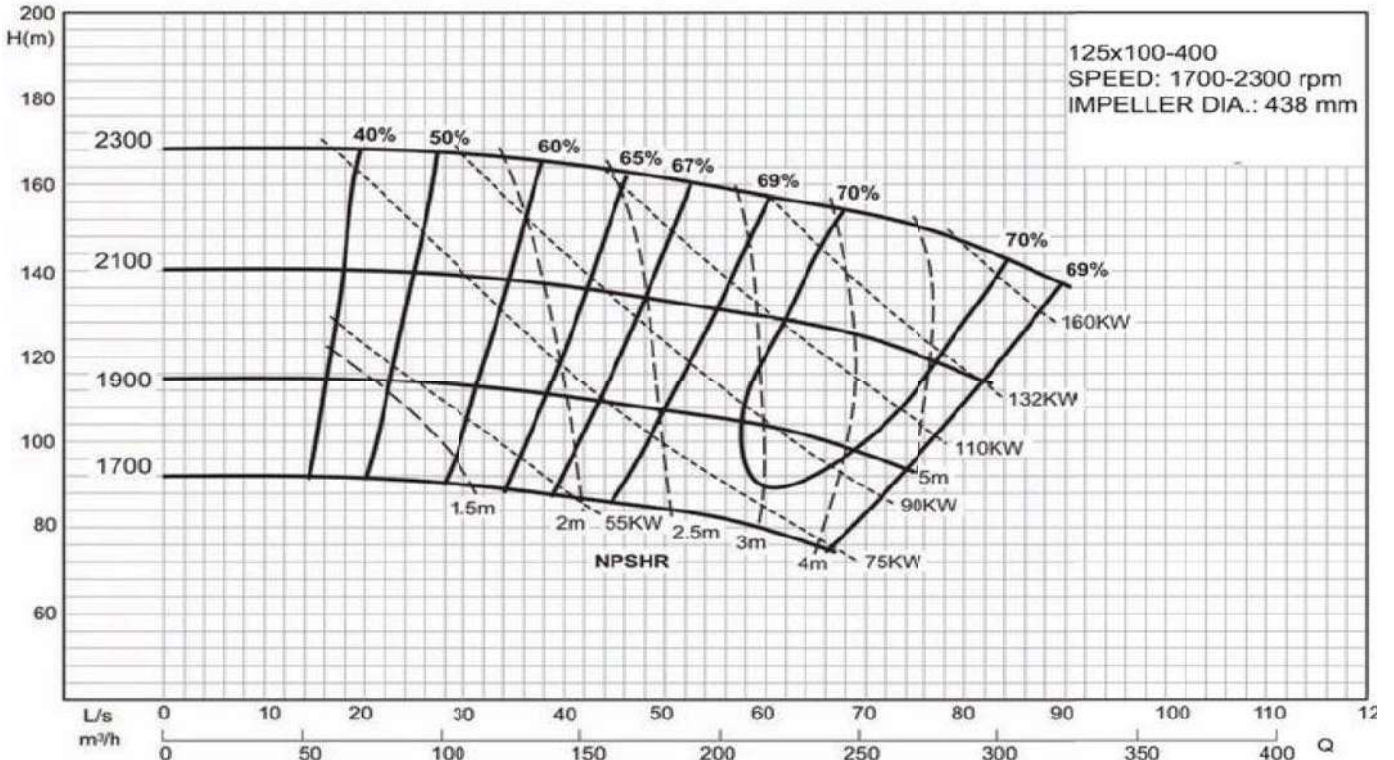
## Automatic Dry Prime 400 series



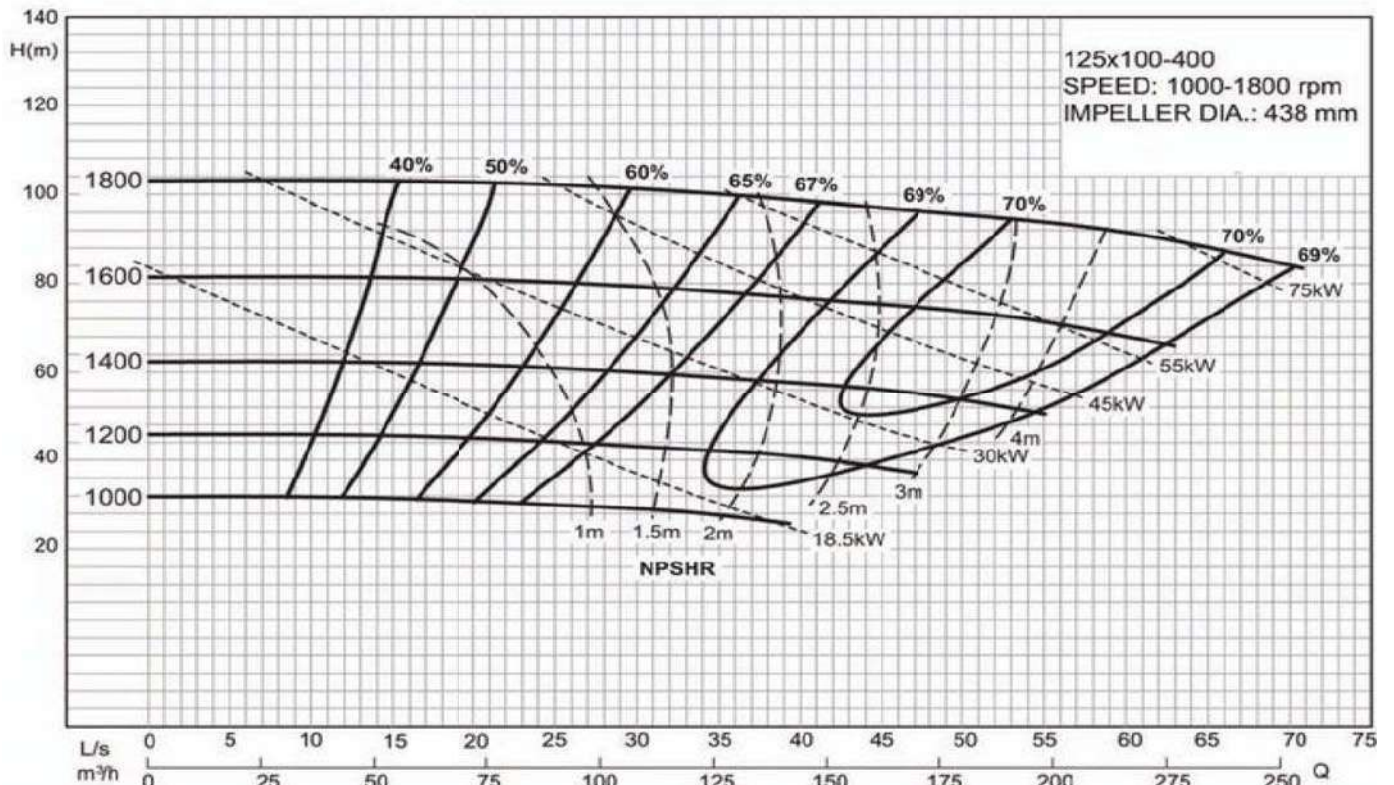
**DRY PRIME PUMPS**

**Part number 125x100-400A-ADP50**

Variable speed - faster speeds:



Variable speed - slower speeds:



### INDRA HYDRO TECH PUMPS PVT LTD

No.85/M, Ground Floor, Industrial Suburb, 2nd Stage Gautham Nagar, Tumkur Road  
Yeshwanthpur, Bangalore 560 022, Karnataka, INDIA  
Tel. : +91 80 4163 5638, Mobile: +91 94835 26899 / 80736 22800  
Email : sales@ihpumps.in, Web : www.ihpindia.in | www.ihpumps.in

# POSEIDON Pumps

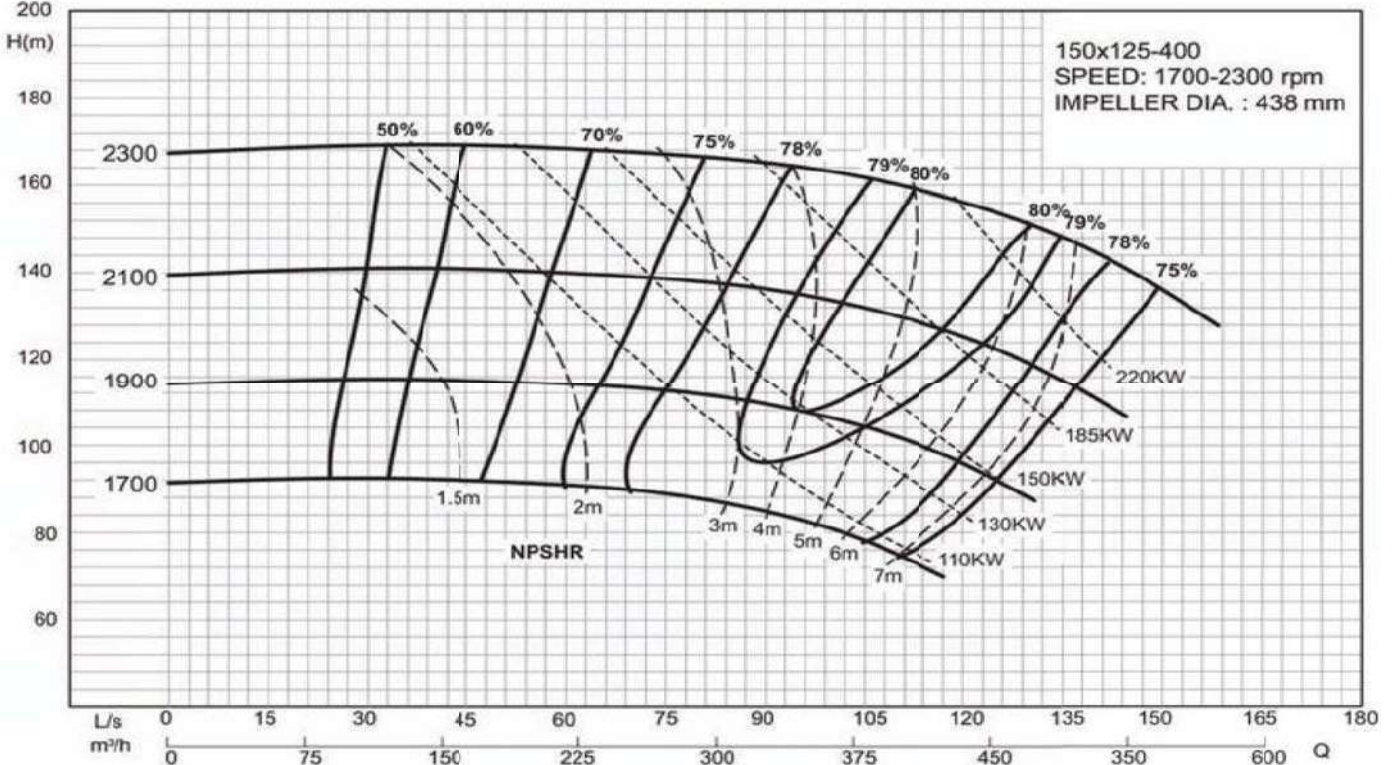
## Automatic Dry Prime 400 series



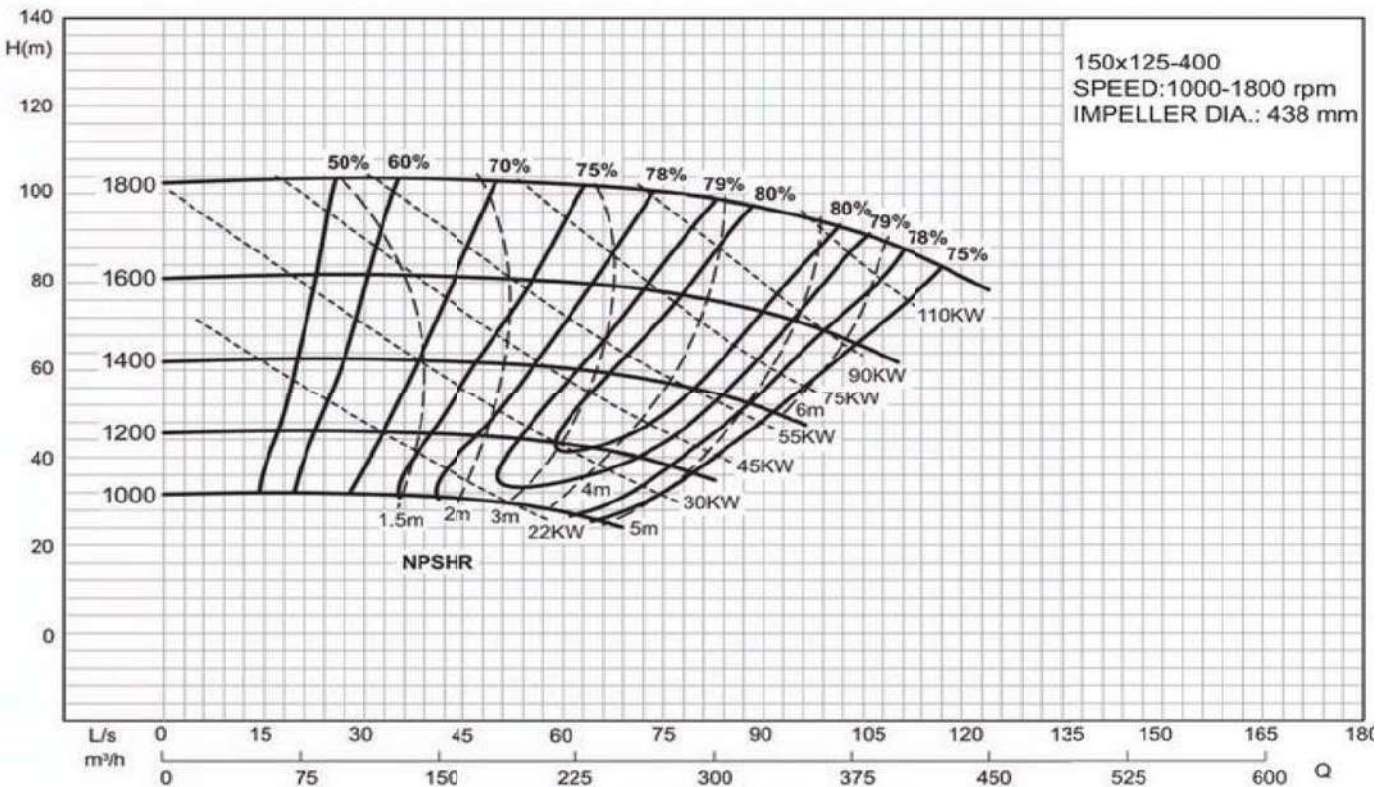
**DRY PRIME PUMPS**

**Part number 150x125-400A-ADP50**

Variable speed - faster speeds:



Variable speed - slower speeds:



### INDRA HYDRO TECH PUMPS PVT LTD

No.85/M, Ground Floor, Industrial Suburb, 2nd Stage Gautham Nagar, Tumkur Road  
Yeshwanthpur, Bangalore 560 022, Karnataka, INDIA  
Tel. : +91 80 4163 5638, Mobile: +91 94835 26899 / 80736 22800  
Email : sales@ihpumps.in, Web : www.ihpindia.in | www.ihpumps.in



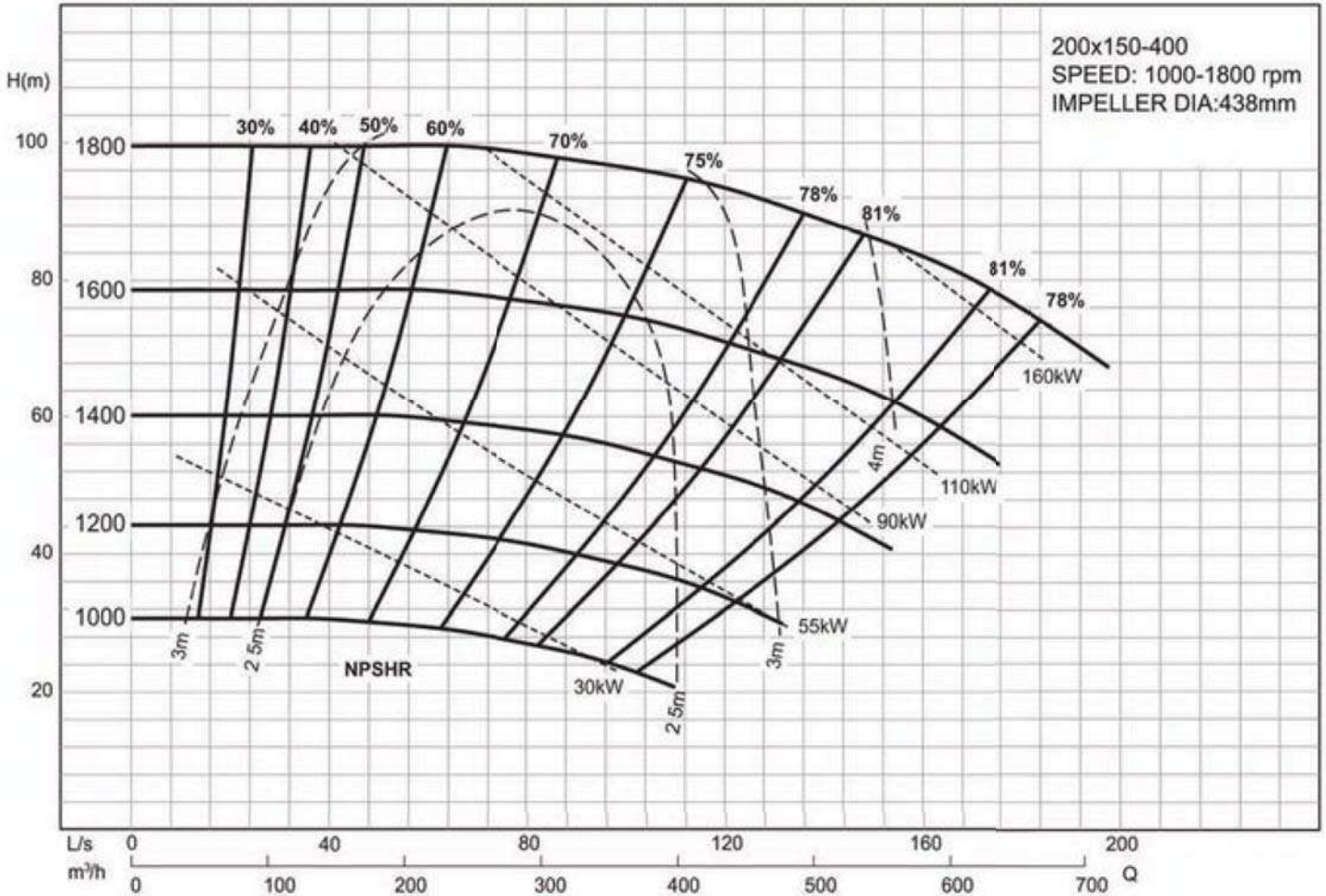
## Automatic Dry Prime 400 series



**DRY PRIME PUMPS**

**Part number 200x150-400A-ADP50**

Variable speed:



### INDRA HYDRO TECH PUMPS PVT LTD

No.85/M, Ground Floor, Industrial Suburb, 2nd Stage Gautham Nagar, Tumkur Road  
 Yeshwanthpur, Bangalore 560 022, Karnataka, INDIA  
 Tel. : +91 80 4163 5638, Mobile: +91 94835 26899 / 80736 22800  
 Email : sales@ihpumps.in, Web : www.ihpindia.in | www.ihpumps.in



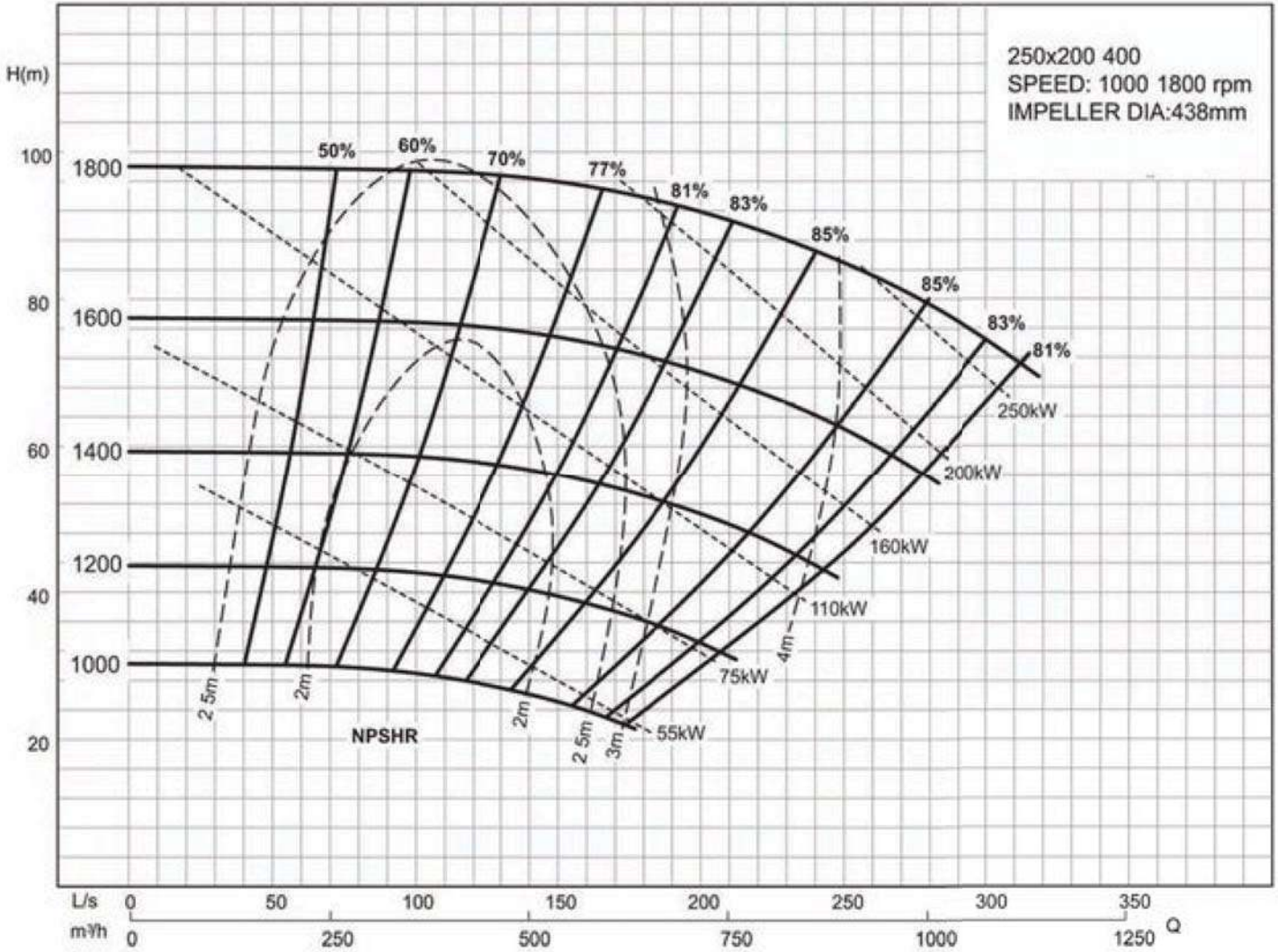


## Automatic Dry Prime 400 series



DRY PRIME PUMPS

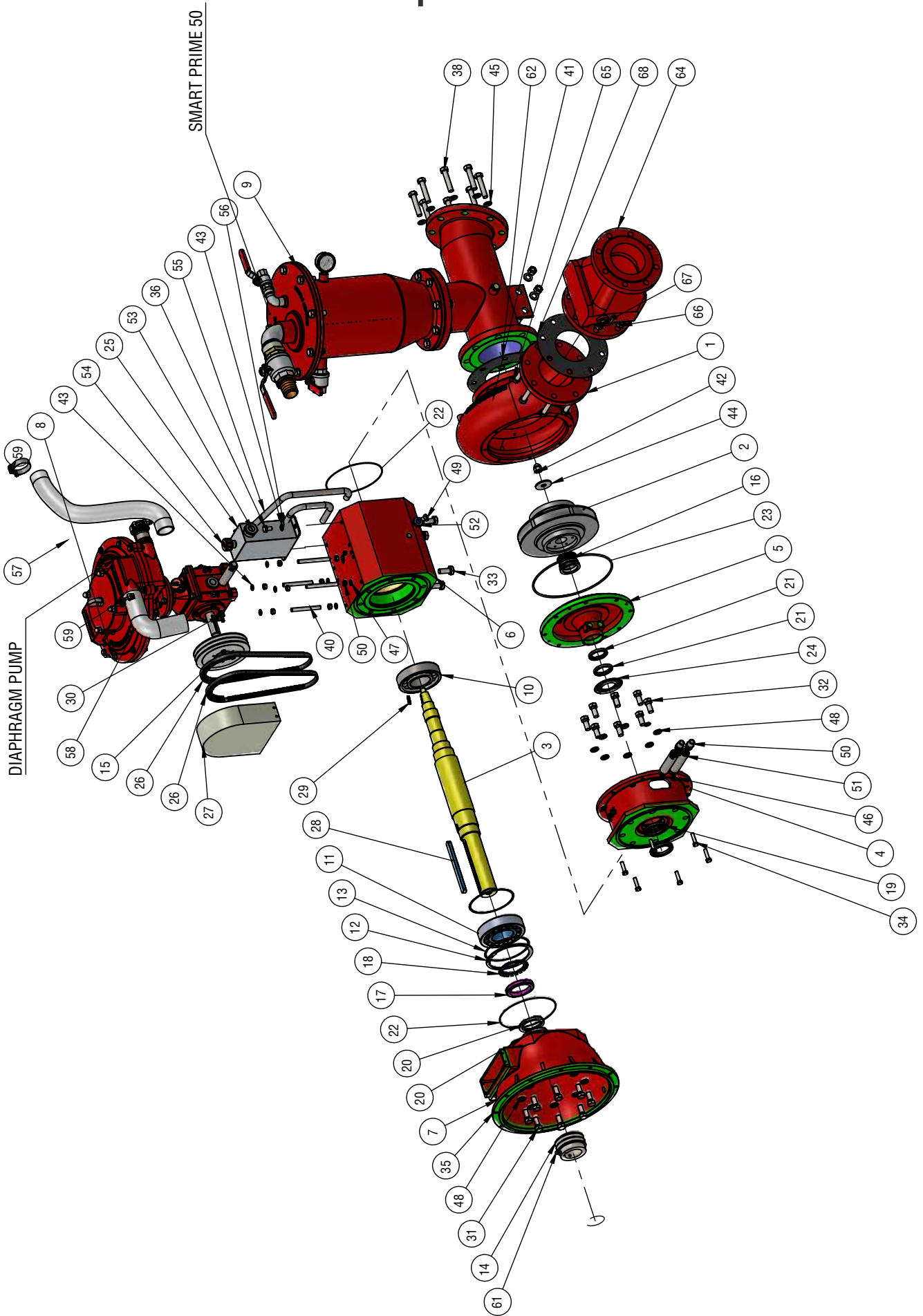
Part number 250x200-400A-ADP50



### INDRA HYDRO TECH PUMPS PVT LTD

No.85/M, Ground Floor, Industrial Suburb, 2nd Stage Gautham Nagar, Tumkur Road  
 Yeshwanthpur, Bangalore 560 022, Karnataka, INDIA  
 Tel. : +91 80 4163 5638, Mobile: +91 94835 26899 / 80736 22800  
 Email : sales@ihpumps.in, Web : www.ihpindia.in | www.ihpumps.in

## Model Exploded view



INDO-AUSTRALIAN JOINT VENTURE AUSTRALIA

### INDRA HYDRO TECH PUMPS PVT LTD

No.85/M, Ground Floor, Industrial Suburb, 2nd Stage Gautham Nagar, Tumkur Road  
 Yeshwanthpur, Bangalore 560 022, Karnataka, INDIA  
 Tel. : +91 80 4163 5638, Mobile: +91 94835 26899 / 80736 22800  
 Email : sales@ihpumps.in, Web : www.ihpindia.in | www.ihpumps.in

## Model Bill of material

PART NUMBER	PART DESCRIPTION	QTY			
1	17	1	Pump casing	BHH10X25-ZP	8
2	117	1	Impeller	BHH12x25-ZP	12
3	432	1	Shaft 431 Stainless Steel	BHH6x12-ZP	2
4	46	1	Bell Housing	BHH16x15-ZP	4
5	57 DR	1	Pump Back Plate	BHH16x15-ZP	8
6	400	1	Bearing Housing	BHH8x40-ZP	3
7	420	1	Bell Housing	ST-12X1.5X120	4
8	SMARTPRIME50	1	Diaphragm (50cfm)	NUT M16	18
9	PRIMETANK150	1	Priming System (150mm)	DN16X2-304SS	1
10	6314	1	Front Bearing	FW M12-ZP	4
11	21315-E1	1	Rear Bearing	FW M16-304SS	1
12	J160	1	Circlip(Dia. 167*4mm)	FW M16-ZP	12
13	SHIM160	2	OD159.5 x ID149.5 x 0.75 shims	SW-10	11
14	PULLEY-2A95-60	1	Shaft Pulley	SW-12	6
15	PULLEY-2A150-30	1	Diaphragm Pulley	SW-16	20
16	SEAL50	1	50mm Mechanical seal	P1/2-G	1
17	KM15	1	Lock nut	N1/2-G	2
18	MB15A	1	Lock washer	OHC1/2-G	2
19	TC12628	2	Front oil seal bearing-80*60*8	SG3/4	1
20	TC12898	2	Back oil seal bearing-88*70*8	SG1	1
21	TC12595	2	Oil seal dry run back plate*65*50*8	BC1/2	1
22	BS170	2	O-RING FOR BEARING HOUSING-196.85*2.62	E50-012	1
23	BS379	1	O-RING FOR pump casing-278.77*3.53	E50-012	1
24	SLINGER50	1	50mm ID Water slinger	E50-012	1
25	OIL TANK-490	1	OIL TANK	AG202AA-050	1
26	BELT-A37	1	DIAPHRAGM CONNECTING BELT	AG202AA-050	1
27	480	1	PRIMING TANK PULLEY GUARD	HC63-68-MS	3
28	KS 18x11x190	1	ENGINE SHAFT KEY-18x11x190	NUT M12X1.5	12
29	KS 10*8*30	1	IMPELLER KEY	GS10X12-B	4
30	KS 6.3x6.3x36	1	DIAPHRAGMA PULLEY KEY- 6.3x6.3x36	KTR COUPLING	1
31	BHH16x1.5x40-ZP	8	HEX HEADED BOLT M16x1.5x40	NRV	
32	BHH16x1.5x35-ZP	8	HEX HEADED BOLT M16x1.5x35	NRV-125	1
33	BHH16x1.5x30-ZP	4	HEX HEADED BOLT M16x1.5x30	BHH16x70-ZP	8
				FW M16	8
				N16-G	8
				GASKET	8
				5" GASKET	1
				RUBBER FLAPPER CHECK VALVE	1
				HEXA HEADED BOLT M16x70	8
				FLATE WASHER M16	8
				HEXA HEADED NUT N20	8
				5" GASKET	1

INDO-AUSTRALIAN JOINT VENTURE AUSTRALIA

### INDRA HYDRO TECH PUMPS PVT LTD

No.85/M, Ground Floor, Industrial Suburb, 2nd Stage Gautham Nagar, Tumkur Road

Yeshwanthpur, Bangalore 560 022, Karnataka, INDIA

Tel. : +91 80 4163 5638, Mobile: +91 94835 26899 / 80736 22800

Email : sales@ihpumps.in, Web : www.ihpindia.in | www.ihpumps.in



All pumps can be supplied with optional sound and weather covers for the engine only or for the whole pump-set.

Poseidon pumps can be mounted on a variety of base types and coupled to a large range of different engine makes and models.



All pump types can be trailer mounted, in either a heavy duty road or site trailer configuration.

## INDRA HYDRO TECH PUMPS PVT LTD

No.85/M, Ground Floor, Industrial Suburb, 2nd Stage Gautham Nagar, Tumkur Road  
Yeshwanthpur, Bangalore 560 022, Karnataka, INDIA  
Tel. : +91 80 4163 5638, Mobile: +91 94835 26899 / 80736 22800  
Email : sales@ihpumps.in, Web : www.ihpindia.in | www.ihpumps.in